

Diagram of coiling and imbrication techniques.  
Original illustration by Kenneth Greg Watson

## 1 | Coiled Basket

**Suquamish Artist**

**ca. 1920-40**

Spruce root, cedar root, grass, cherry bark

This diagram shows the complex “coiling” and “imbrication” techniques used in basket weaving. Coiling is a method of sewing and attaching spiraled bundles to the round before it. Imbrication is the decorative element, made by folding strips of material under the sewing stitches to create a design.

2.5E562

Gift of Arthur & Patricia Wilcox

in memory of Minnie Mary Lawrence Moyer

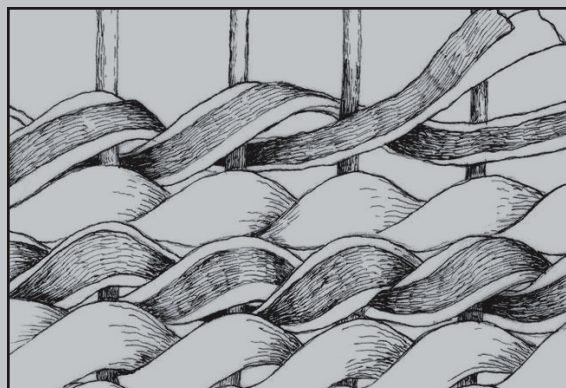


Diagram of twining and overlay techniques.  
Original illustration by Kenneth Greg Watson

## 2 | Twined Basket

**Skokomish Artist**

**ca. 1900-30**

Cattail, bark, grass

This illustration shows a diagonal twill weaving technique. It uses two horizontal weaving elements (wefts) that twist and wrap around the vertical weaving elements (warps). Wefts can be added and the number of warps passed over can change to create geometric patterns and designs.

1-500

Caroline McGilvra Burke Collection



Makah weaver Agnes Alabush Penn  
with husband William Penn

## 3 | Lidded Basket

**Makah Artist**

**ca. 1900**

Cedar bark, sedge, bear grass, seagrass

My choice of this basket was inspired by generations of Makah weavers, including my first cousin once removed, Agnes Alabush Penn, pictured here. Agnes was the oldest daughter of Maggie Alabush, my grandmother Celia’s older sister.

1-10805

Gift of Eleanor J. Graves

## 4 | Coiled Basket

**Siagit, Cowlitz and Nisqually**

**ca. 1895**

Cedar root, cedar bark, bear grass, horsetail, leather

2005-21/1

Gift of the Estate of John Putnam